

Northern

# Hifive Glass Storage

Press release — Autumn 2023



Featuring the same cool and charismatic qualities as the original Hifive Storage System, Norwegian designer Rudi Wulff has made his sought-after piece, smarter and more flexible than ever.

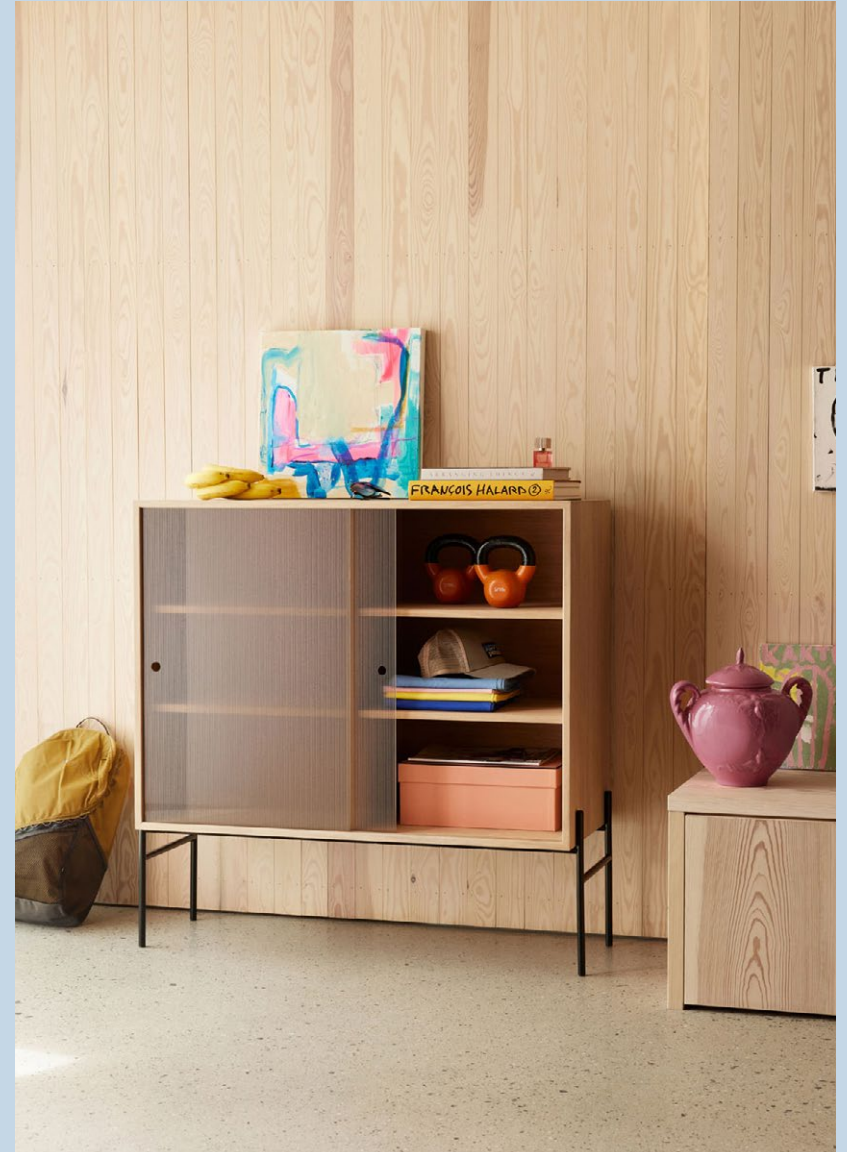
Providing practical storage without compromising on style, this latest addition now includes a set of finely fluted and tempered sliding glass doors. Tinted with bronze, this intriguing matt and semi-transparent new front allows viewers to get just a hint at what's inside without giving away too much.

Available in four spacious sizes and three wood finishes, configure the Hifive Glass Storage System to perfectly suit your space and pack your living room, bedroom or hallway personality as well as purpose.

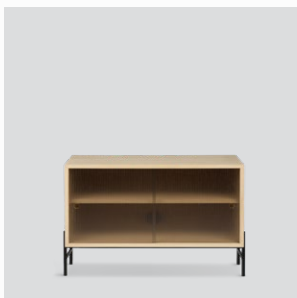
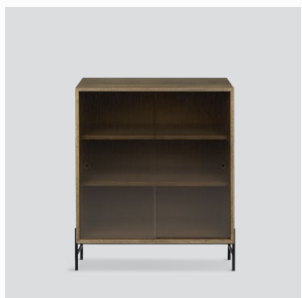
“I want to create products to be used, touched and understood. Furniture pieces that trigger curiosity, are visually interesting and create a good feeling.”

Design by Rudi Wulff

Press release — Autumn 2023



## Models and prices



Hifive glass cabinet H74 floor  
75cm / 100cm  
H15 legs / H28 legs

Hifive glass storage system  
75cm / 100cm / 150cm / 200cm  
H15 legs / H28 legs / wall

Prices from:  
NOK 19 900,- / SEK 21 900,-  
DKK 15 500,- / EURO 1 990,-

Prices from:  
NOK 11 600,- / SEK 12 900,-  
DKK 8 900,- / EURO 1 200,-

Colours:  
Light oiled oak / smoked oak /  
black painted oak

Available:  
October 2023

Retailers and distribution:  
See details at [northern.no](http://northern.no)

Press release — Autumn 2023

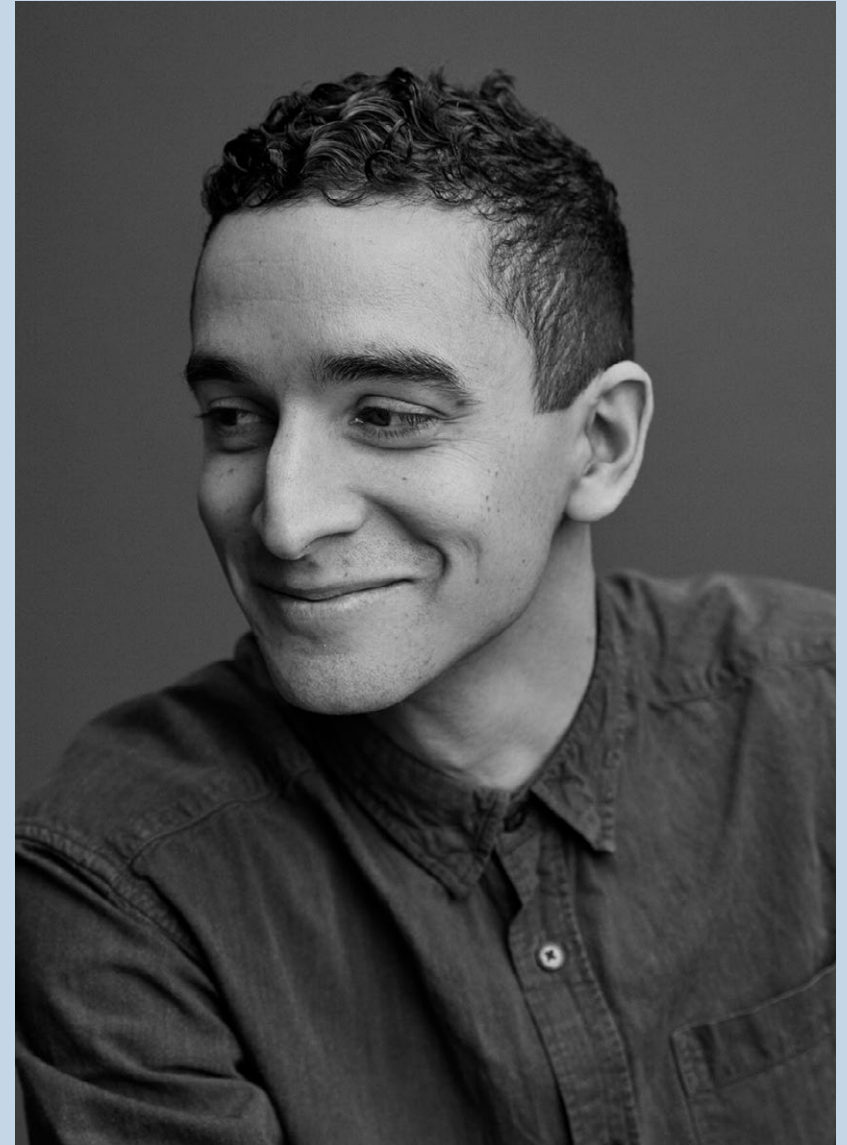
Photo by Sara Spilling  
Styling by Per Olav Sølberg



Rudi Wulff is based in Oslo, where he received a master's degree from the Oslo School of Architecture and Design. After establishing his own studio, Rudi pioneered solutions for modern urban issues, designing new concepts for two-wheeled transportation and launching a new vision for traversing the city. In the past, Rudi has designed lighting, flexible electronics and static display systems, and today his repertoire includes furniture and household accessories.

All of Rudi's designs are underpinned by principles of Scandinavian efficiency, and his products are often characterised by functionality, clean lines and sleek surfaces. Rudi's designs for Northern include the modular storage system Hifive and the classic candleholder series Granny.

# Rudi Wulff



## About

The Northern brand was born in the studios of Northern Lighting, where a team of creatives have been illuminating lives since 2005. The new lifestyle collection includes furniture, lighting and accessories. Inspired by the pale beauty and rough-cut contrasts of the North, the Oslo-based brand is Nordic in spirit, yet global in style.

## Contact

Northern  
Bygdøy allé 68  
0265 Oslo, Norway

Phone – (+47) 40 00 70 37  
Mail – [post@northern.no](mailto:post@northern.no)  
Web – [northern.no](http://northern.no)

Press requests:  
Head of PR & Marketing,  
Stine Birkeland,  
[stine@northern.no](mailto:stine@northern.no)



**Northern**