

# Northern

Textile and leather collection 2024



# Content

Page	Textile type	Price group
3	Cura	0
4	Autumn	0
5	Reflect	1
6	Brusvik	1
7	Remix 3	2
8	Atlas	2
9	Steelcut Trio 3	3
10	Fiord 2	3
11	Canvas 2	3
12	Vidar	4
13	Moss	4
14	Ultra leather	4

# Cura by Gabriel

Cura is a multi-purpose, two-coloured melange upholstery fabric made from 98% post-consumer recycled polyester. It fuses modern performance with a warm, casual aesthetics and a soft, voluminous touch. The fabric's matt, slightly heathered and natural-looking texture imitates the aesthetics of natural fibres, adding feel-good factor and a touch of classic luxury to any type of furniture.

The Cura colour palette is inspired by nature, warm and soft with a bright dimension. It encompasses 50 colourways, spanning nature's own shades and a multiplicity of greys to burgundy, soft pinks, and a variety of greens and blues. The fabric's natural-fibre texture brings an authenticity and vibrancy to the colours that add to the warm and natural expression.

**Design:** Cenk Kivrikoglu

**Composition:** 98% post-consumer recycled polyester, 2% Polyester

**Width:** 140 cm

**Weight:** 420 g/lin.m

**Durability:** 100,000 Martindale

**Pilling:** 4-5 (EN ISO 12945-2)

**Lightfastness:** 5-8 (ISO 105-B02)

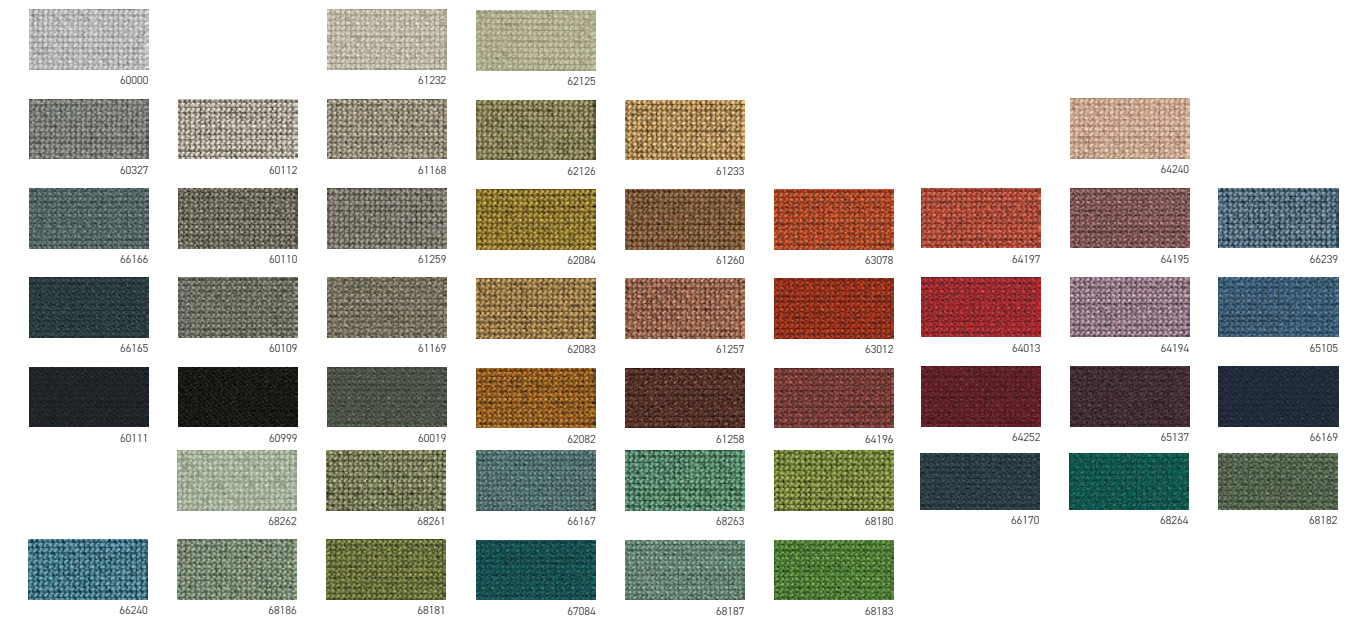
**Warranty:** 10 years

**Produced in:** Lithuania

**Sustainability:** OEKO-TEX® STANDARD 100, EU Ecolabel, recyclable

**Price group:** 0

**More info:** <https://www.gabriel.dk/en/fabrics/textile/Cura/52856>



# Autumn by Kvadrat

Autumn is an upholstery textile woven from 100% recycled polyester. It comes in a nuanced colour palette designed by Teruhiro Yanagihara, inspired by the transient nature of the 'ageing season'.

The textile is constructed with a recycled polyester yarn made from used plastic bottles and woven in a layered double-beam weave. This composition gives Autumn a soft, natural hand and allows it to be continuously recycled with no degradation in quality.

A dark, unicoloured background is used across Autumn's colour palette, and offers a rich contrast to the melange top layer, which features yarns created from a mix of two fibre-dyed colours. The scale comprises a selection of neutrals including a white melange, papery beige notes and greys, and characterful reds, blues, and oranges, alongside a lively black shade.

**Design:** Teruhiro Yanagihara

**Composition:** 100% recycled polyester

**Yarn type:** Filament

**Binding:** Dobby

**Width:** 140 cm

**Weight:** 580 g/lin.m

**Durability:** 50,000 Martindale

**Pilling:** Note 4 (EN ISO 12945)

**Lightfastness:** Note 6-7 (ISO 105-B02)

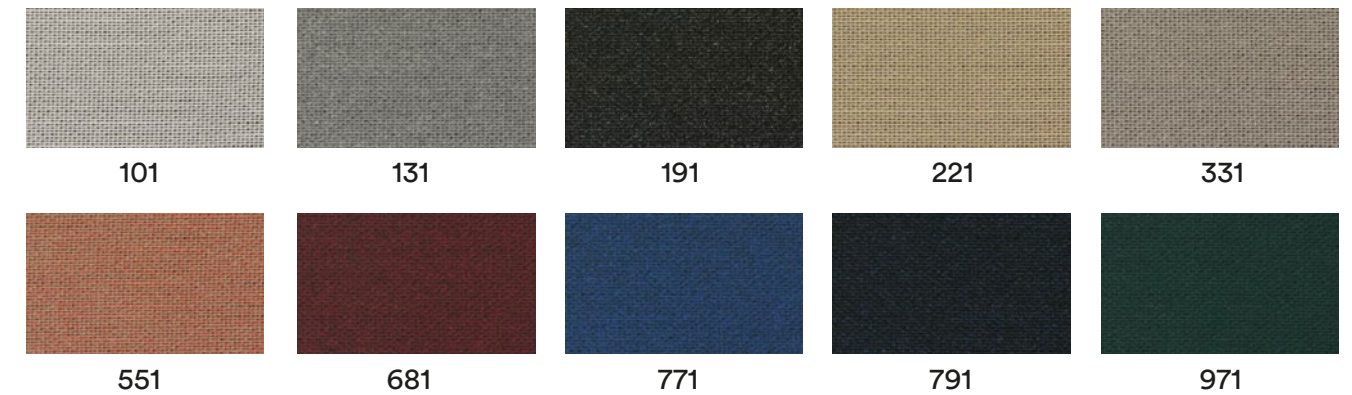
**Warranty:** 10 years

**Produced in:** Turkey

**Sustainability:** Recyclable, Greenguard Gold, REACH, HPD

**Price group:** 0

**More info:** [kvadrat.dk/en/products/upholstery/1045-autumn](https://kvadrat.dk/en/products/upholstery/1045-autumn)



# Reflect by Kvadrat

Reflect is a sophisticated twill weave upholstery textile designed by Patricia Urquiola made from recycled polyester, with a natural expression and a particularly tactile touch.

Unusual for a textile crafted from recycled fibres, Reflect has a particularly delicate and soft hand. Made from recycled polyester, it offers excellent functional performance, as well as a full scale of vibrant colours.

The versatile palette for Reflect comprises 35 colourways and expresses confident colour combinations by matching warm notes with closely related nuances. Reflect is suitable for contract and private use.

**Design:** Patricia Urquiola

**Composition:** 100% post-consumer recycled polyester

**Yarn type:** Filament

**Binding:** Twill

**Width:** 140 cm

**Weight:** App. 430 g/lin.m

**Durability:** 100,000 Martindale

**Pilling:** Note 4, (EN ISO 12945)

**Lightfastness:** Note 6-7 (ISO 105-B02)

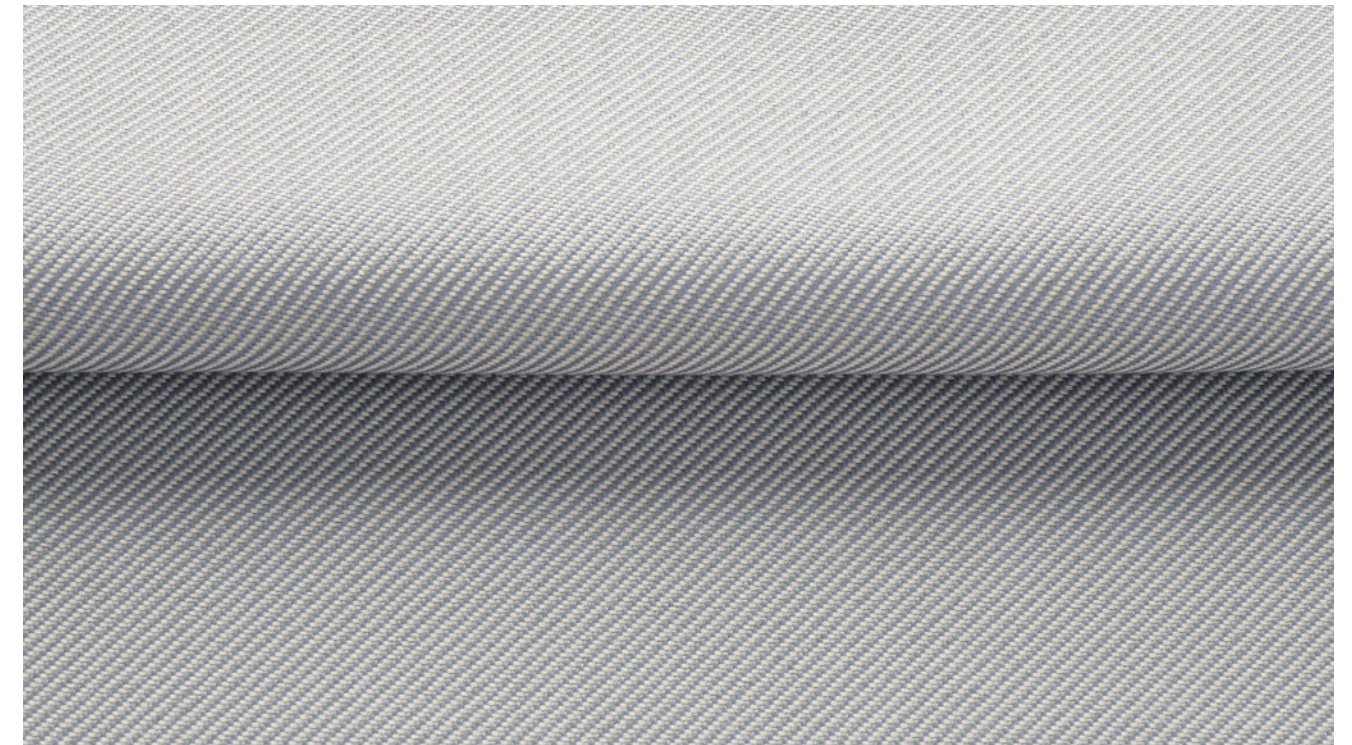
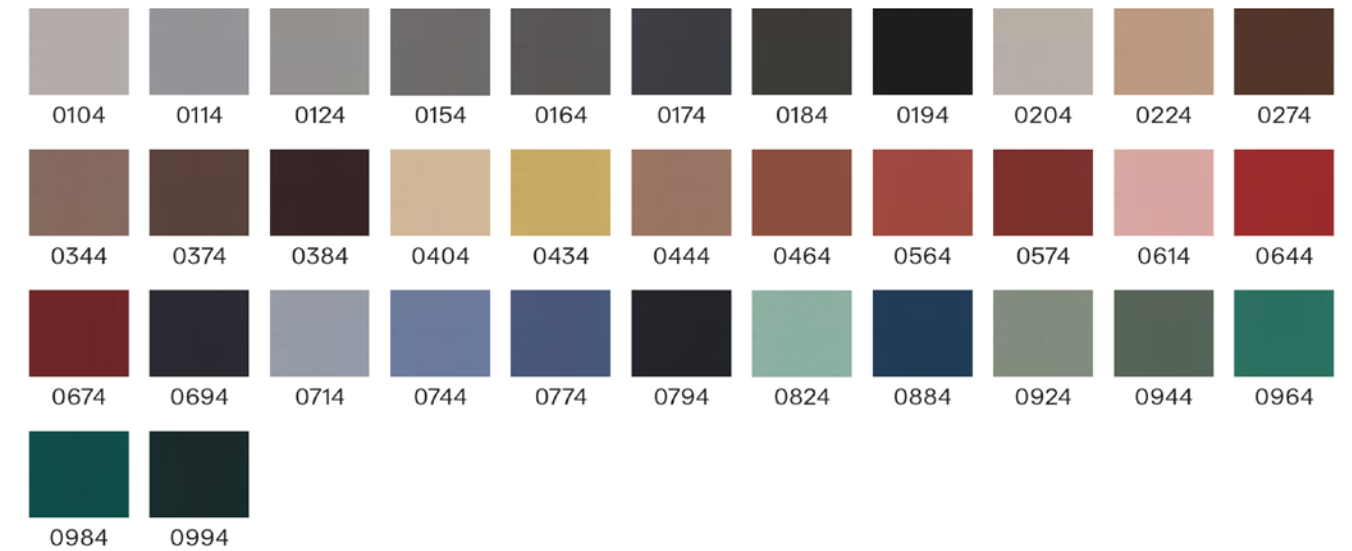
**Warranty:** 10 years

**Produced in:** Holland

**Sustainability:** Recyclable, Greenguard Gold, HPD, EPD

**Price group:** 1

**More info:** [kvadrat.dk/en/products/upholstery/7798-reflect](https://kvadrat.dk/en/products/upholstery/7798-reflect)



# Brusvik by Kvadrat

Crafted by Innvik in Norway, Brusvik is a classic and timeless fabric made of sustainable wool. The contrasting nuances within each color creates a dynamic play when applied to our furniture. Brusvik is a good choice for both private and public spaces.

**Design:** Tone Barnung

**Composition:** 92 % new wool, 8% polyamid

**Width:** 140 cm

**Weight:** App. 520 g/lin.m

**Durability:** 100,000 Martindale

**Pilling:** 3-4

**Lightfastness:** 5-7

**Produced in:** Norway

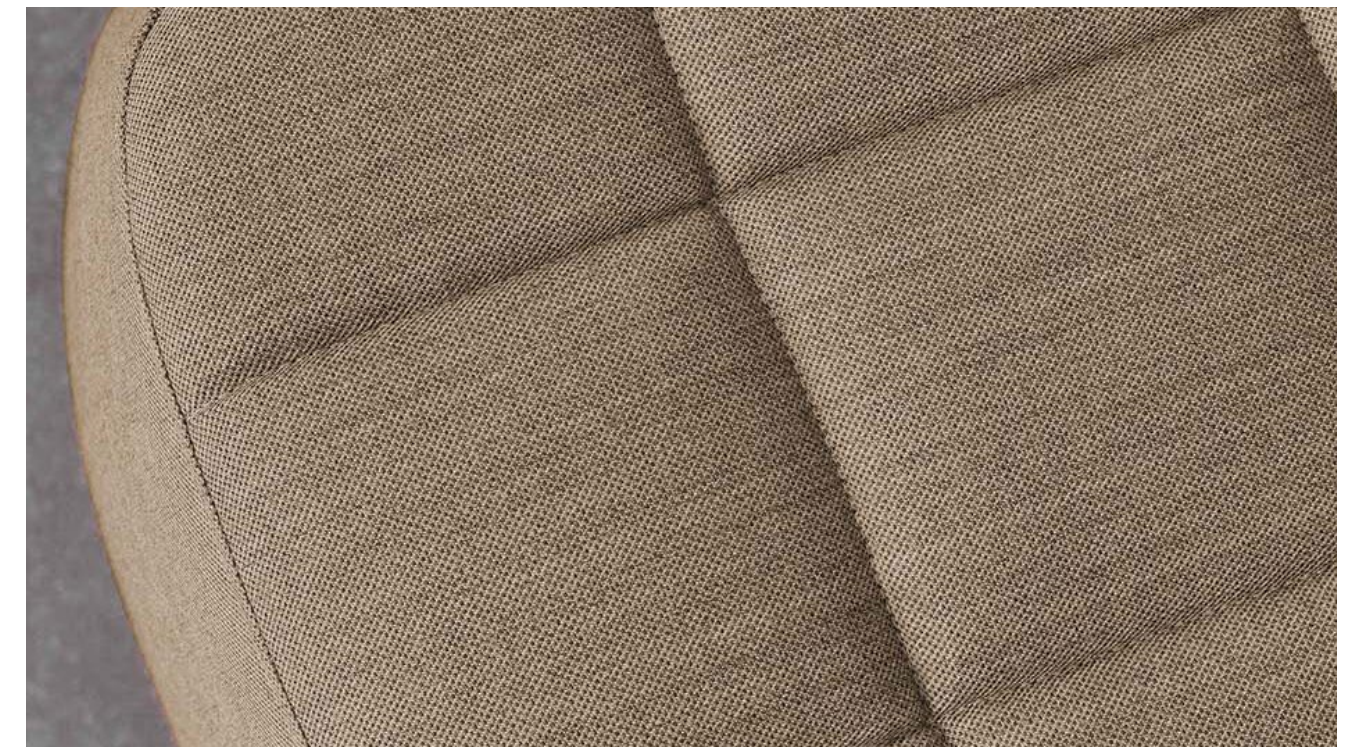
**Sustainability:** Recyclable, Greenguard Gold, HPD, EPD

**Price group:** 1

**More info:** [innvik.no/menu-kolleksjon/brusvik](https://innvik.no/menu-kolleksjon/brusvik)



\* MOQ required



# Remix 3 by Kvadrat

Remix 3 is an elegant upholstery textile distinguished by exceptional depth of colour available in 72 sophisticated colours.

Remix 3 looks unicoloured from a distance but reveals subtle details and colour contrasts when viewed close-up. The textile features a tight, minimalistic weave, and derives its lively colour play from a combination of two different mélangé yarns, which each combine up to three hues.

**Design:** Giulio Ridolfo

**Composition:** 90% new wool worsted, 10% nylon

**Yarn type:** Worsted

**Binding:** Plain

**Width:** 140 cm

**Weight:** 420 g/lin.m

**Durability:** 100,000 Martindale (EN ISO 12947)

**Pilling:** Note 4 (EN ISO 12945)

**LightFastness:** Note 6-7 (ISO 105-B02)

**Warranty:** 10 years

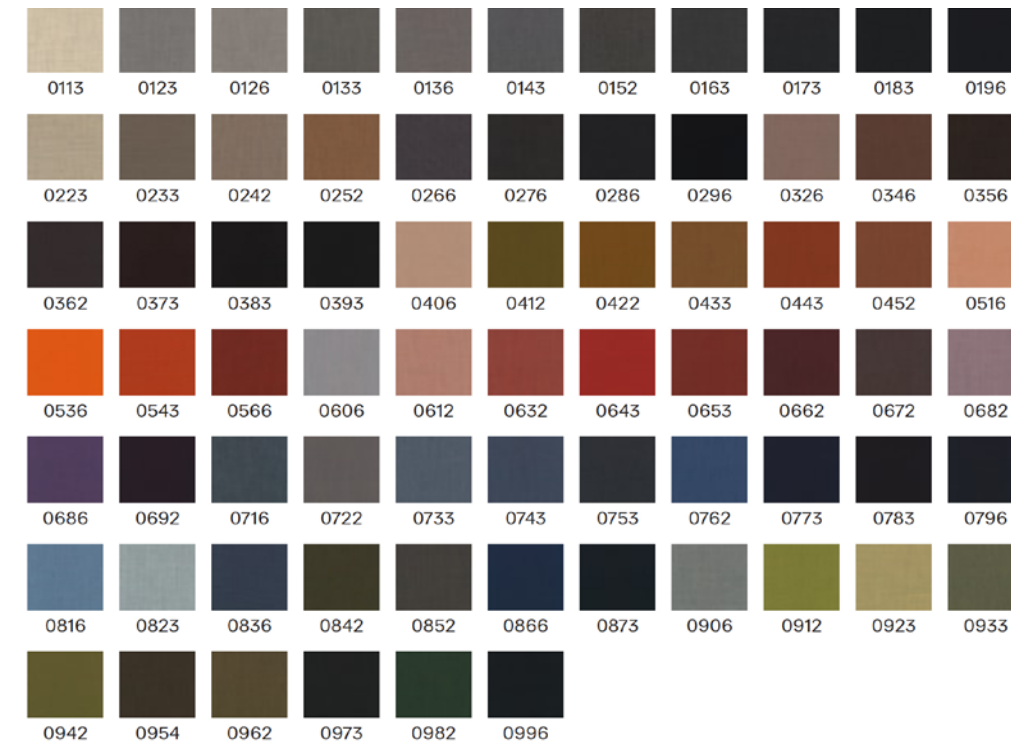
**Produced in:** UK

**Sustainability:** EU Ecolabel, Greenguard Gold, HPD, EPD

**Price group:** 2

**More info:**

[kvadrat.dk/en/products/upholstery/2968-remix-3](https://kvadrat.dk/en/products/upholstery/2968-remix-3)



# Atlas by Kvadrat

Woollen upholstery textile Atlas particularly stands out for its new mélange expression and meticulously nuanced colour blends.

Atlas was created to deliver a pioneering mélange look and designer Margrethe Odgaard has achieved this with a construction that unites two different coloured yarns – each of which combines two colours.

With Atlas, unlike other mélanges, the colours are not blended in the fibres. Instead they are expressed, pattern-like, through the structure of the material.

**Design:** Margrethe Odgaard

**Composition:** 90% new wool worsted, 10% nylon

**Yarn type:** Worsted

**Binding:** Plain

**Width:** 140 cm

**Weight:** App. 400 g/lin.m

**Durability:** 100,000 Martindale (EN ISO 12947)

**Pilling:** Note 4-5 (EN ISO 12945)

**Lightfastness:** Note 6-7 (ISO 105-B02)

**Warranty:** 10 years

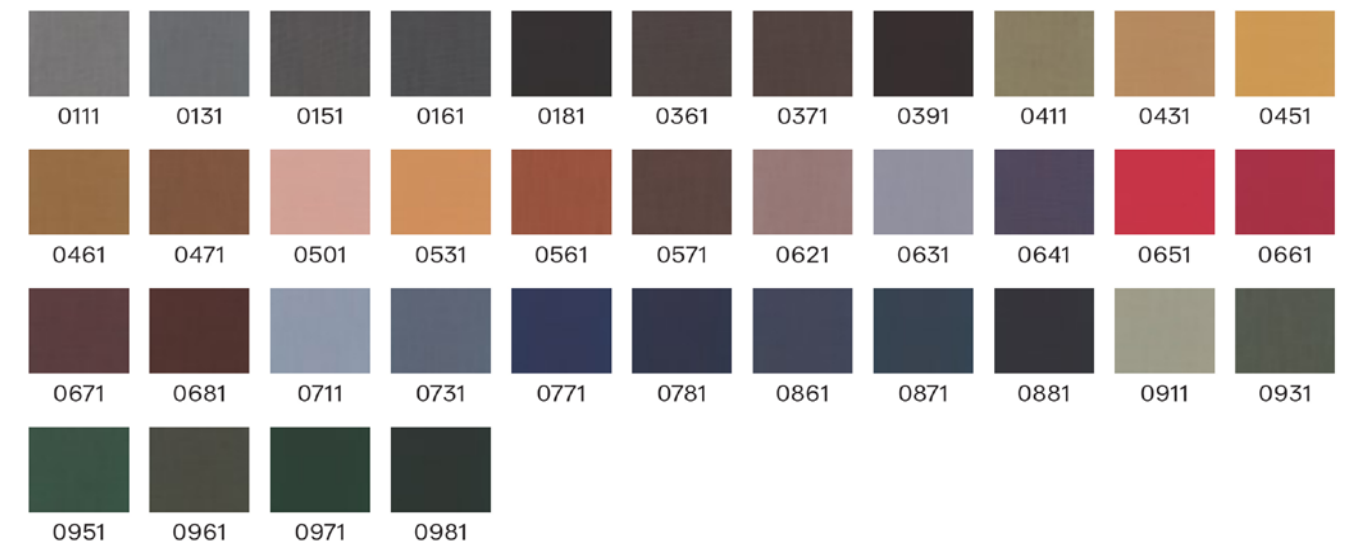
**Produced in:** UK

**Sustainability:** EU Ecolabel, Greenguard Gold, HPD, EPD

**Price group:** 2

**More info:**

[kvadrat.dk/en/products/upholstery/1310-atlas](https://kvadrat.dk/en/products/upholstery/1310-atlas)





# Steelcut Trio 3 by Kvadrat

Steelcut Trio is a hardwearing woollen upholstery textile with the same construction as Steelcut. Originally designed by Frans Dijkmeijer, it comes in updated colourways crafted by Giulio Ridolfo.

The three-dimensional surface of Steelcut Trio resembles small pyramids or steel points. Despite the complexity of the textile's innovative weave, it has a simple, precise expression. Steelcut Trio is yarn-dyed and made from 3 differently coloured yarns.

**Design:** Frans Dijkmeijer / Giulio Ridolfo

**Composition:** 90% new wool, 10% nylon

**Yarn type:** Stapel, worsted

**Binding:** Semi-plain

**Width:** 140 cm

**Weight:** app. 770 g/lin.m

**Durability:** 100,000 Martindale

**Pilling:** 4 (ISO 1-5)

**LightFastness:** Note 6-7 (ISO 105-B02)

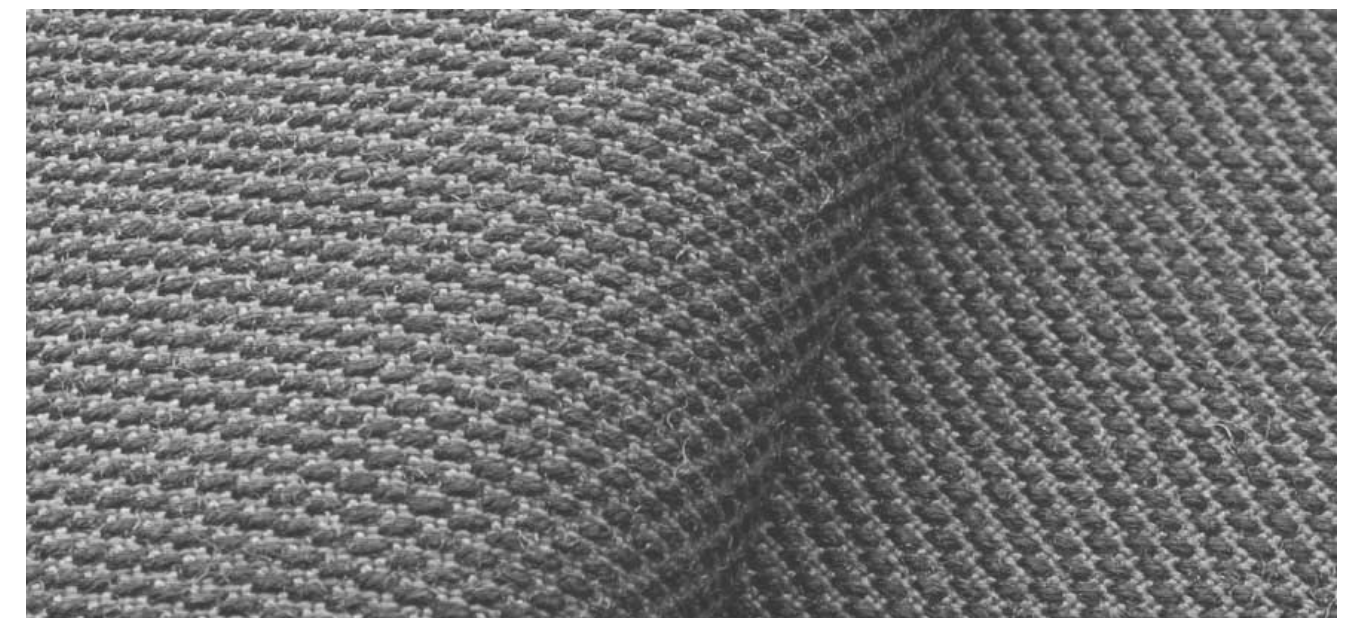
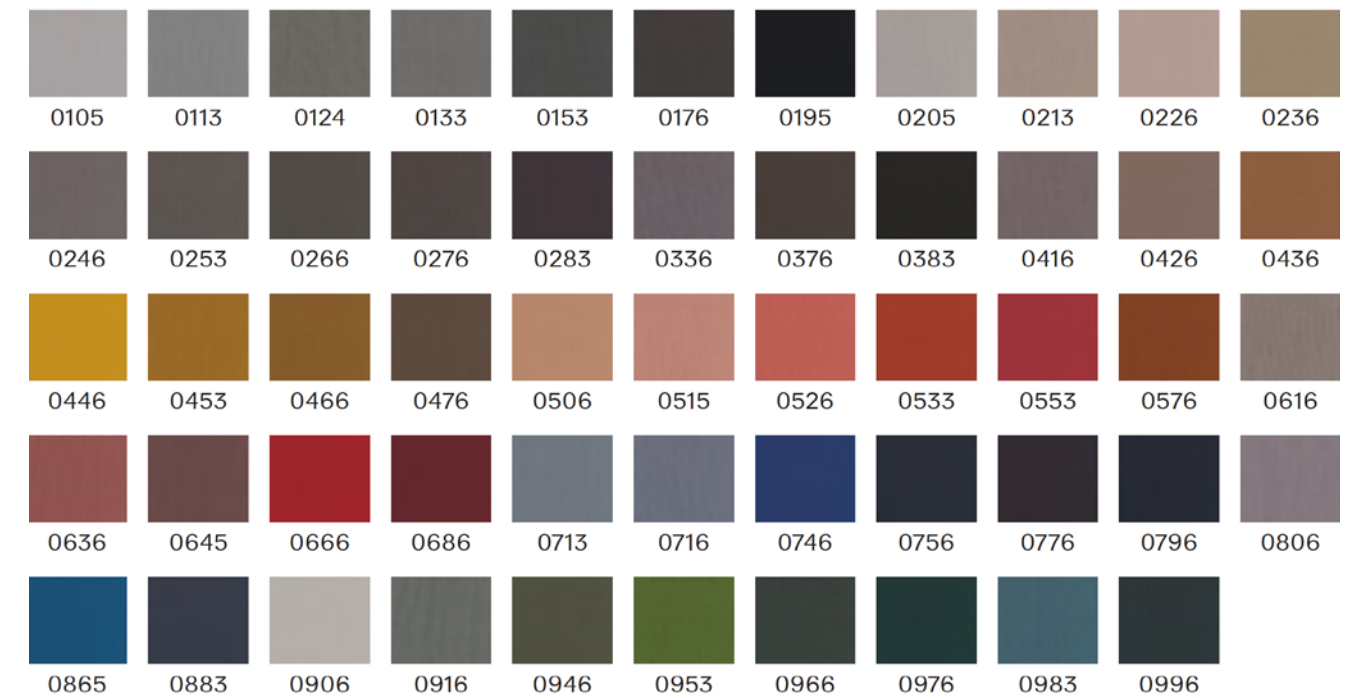
**Warranty:** 10 years

**Produced in:** United Kingdom

**Sustainability:** EU Ecolabel, Greenguard Gold, HPD, EPD

**Price group:** 3

**More info:** [kvadrat.dk/en/products/upholstery/2965-steelcut-trio-3](https://kvadrat.dk/en/products/upholstery/2965-steelcut-trio-3)



# Fiord 2 by Kvadrat

Fiord is a versatile woollen upholstery textile with a subtle three-dimensional look. Originally designed by Norwegian designer Tone Barnung, it comes in refreshed colours created in collaboration with Louise Sigvardt.

The construction of Fiord combines a mélangé yarn with a unicoloured yarn that creates pearl-like dots that play across the textile's surface. This sophisticated expression reflects a key source of inspiration behind the design: moonlight glittering like pearls on the rippling waters of a Norwegian fjord.

**Design:** Tone Barnung / Louise Sigvardt

**Composition:** 92% new wool worsted, 8% nylon

**Yarn type:** Worsted

**Binding:** Dobby

**Width:** 140 cm

**Weight:** 493 g/lin.m

**Durability:** 60,000 Martindale (EN ISO 12947)

**Pilling:** 4-5 (EN ISO 12945)

**Lightfastness:** Note 5-7 (ISO 105-B02)

**Warranty:** 10 years

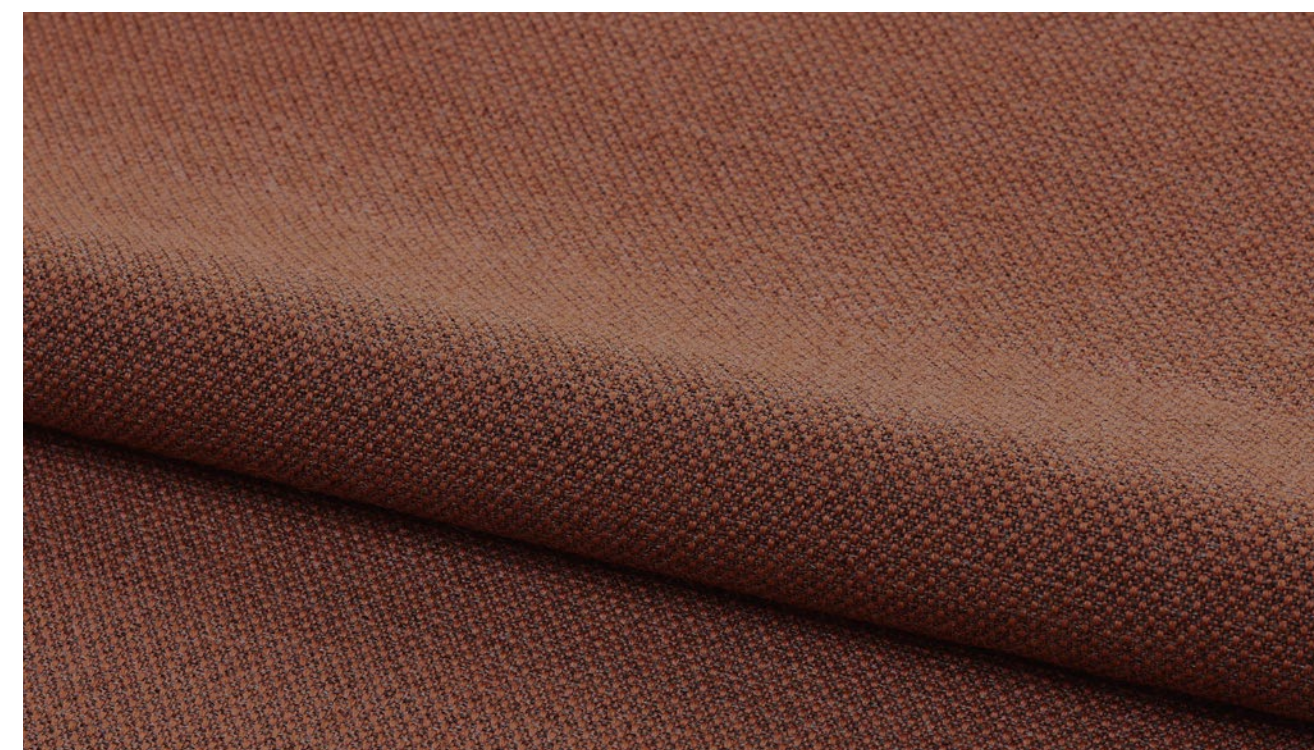
**Produced in:** Norway

**Sustainability:** EU Ecolabel, Greenguard Gold, HPD, EPD

**Price group:** 3

**More info:**

[kvadrat.dk/en/products/upholstery/1279-fiord-2](https://kvadrat.dk/en/products/upholstery/1279-fiord-2)



# Canvas 2 by Kvadrat

Canvas is a vibrant woollen upholstery textile created by Giulio Ridolfo. Particularly well-suited to large surfaces thanks to its pronounced structure, it features a soft weave and an expanded palette inspired by the landscapes of Skagen, Denmark.

The melange yarn used to craft Canvas combines three colours, with six hues in every colourway. The textile offers exceptional colour richness and an intriguing expression. From a distance, it has the calm surface of a unicoloured textile. But, get closer, and shimmering colour nuances, delicate contrasts and an elegant structure emerge.

**Design:** Giulio Ridolfo

**Composition:** 90% new wool worsted, 10% nylon

**Yarn type:** Worsted

**Binding:** Semi-plain weave

**Width:** 140 cm

**Weight:** 480 g/lin.m

**Durability:** 100,000 Martindale (EN ISO 12947)

**Pilling:** Note 4-5 (EN ISO 12945)

**Lightfastness:** Note 5-7 (ISO 105-B02)

**Warranty:** 10 years

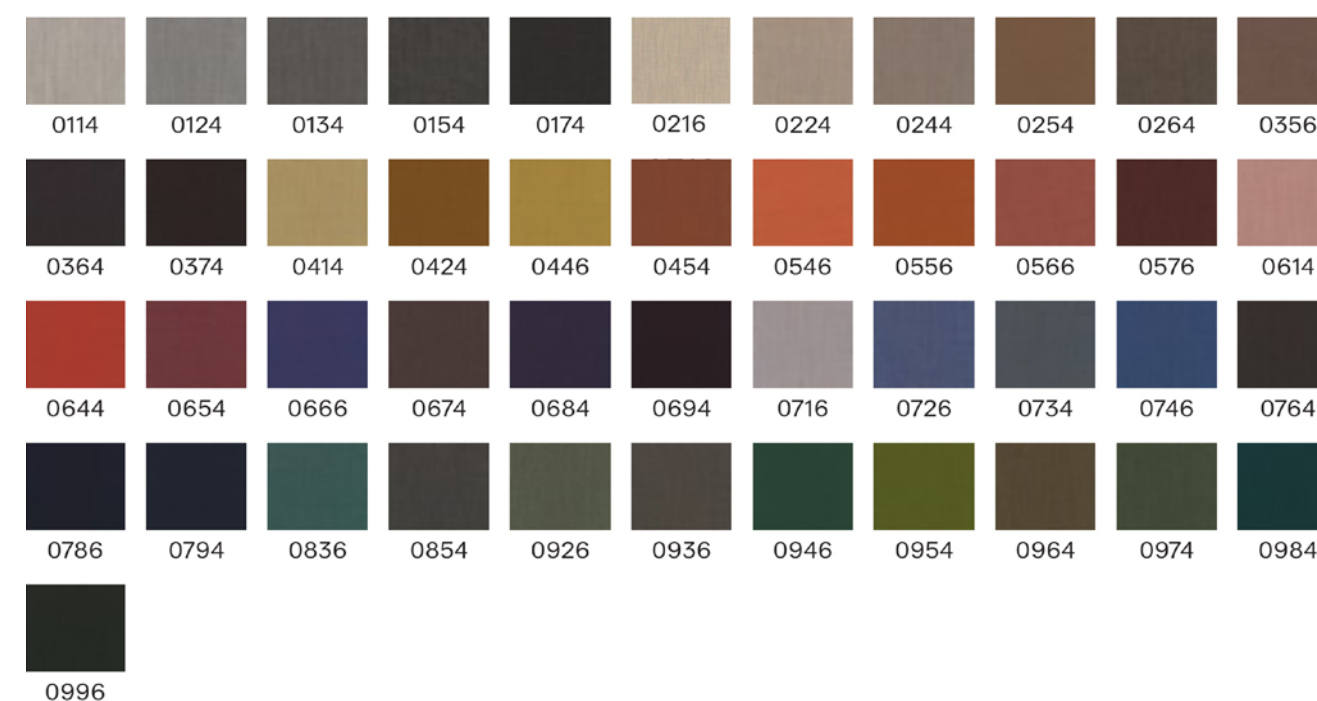
**Produced in:** UK

**Sustainability:** EU Ecolabel, Greenguard Gold, HPD, EPD

**Price group:** 3

**More info:**

[kvadrat.dk/en/products/upholstery/1221-canvas-2](https://kvadrat.dk/en/products/upholstery/1221-canvas-2)



# Vidar by Kvadrat

Woven from bouclé yarns with a regular loop size, Vidar has a deep, tight, large-grained texture that lends itself particularly well to the graphic use of colour in upholstery. Originally designed by Fanny Aronsen, Vidar has been re-coloured by Raf Simons, with shades ranging from fresh jade green, raspberry pink and iris blue through to brick and earth tones, and easy neutrals.

The gentle satin surface finish of the weave contrasts with the deep shadowy tones in the depths, giving a multifaceted richness to the intense colours in the range.

**Design:** Fanny Aronsen / Raf Simons

**Composition:** 94% new wool worsted, 6% nylon

**Width:** 140 cm

**Weight:** 765 g/lin.m

**Durability:** 60,000 Martindale (EN ISO 12947)

**Pilling:** 4 (EN ISO 12945)

**Lightfastness:** Note 5-7 (ISO 105-B02)

**Warranty:** 10 years

**Produced in:** Norway

**Sustainability:** EU Ecolabel, Greenguard Gold, HPD, EPD

**Price group:** 4

**More info:**

[kvadrat.dk/en/products/upholstery/8484-vidar-3](https://kvadrat.dk/en/products/upholstery/8484-vidar-3)



# Moss by Kvadrat

The mixture of twisted yarn and chenille gives the fabric surface a unique structure with an appearance of movement but also creates a soft handle and adds a special dimension to the furniture it covers.

The twenty-two colourways are either one- or two-tone combinations inspired by Vincent van Duysen's own home interior and range from cool cement and soft blue to oily green, curry yellow and the shades of natural wood.

**Design:** Sahco

**Composition:** 52% cotton, 22% viscose, 14% Polyacrylic, 6% linen, 3% nylon, 3% polyester

**Width:** 138 cm

**Weight:** 918 g/lin.m

**Durability:** 50,000 Martindale (EN ISO 12947)

**Pilling:** Note 4-5 (EN ISO 12945)

**Lightfastness:** Note 5-7 (ISO 105-B02)

**Warranty:** 2 years

**Produced in:** Belgium

**Sustainability:** EPD

**Price group:** 4

**More info:**

[kvadrat.dk/en/products/upholstery/600664-moss](https://kvadrat.dk/en/products/upholstery/600664-moss)



# Ultra by Sørensen

One of the most versatile Protected leathers around, Ultra is the perfect everyday type of leather. Buffed and embossed and truly nice to touch, the surface features a uniform grain pattern over the entire hide which gives it a consistent look.

ULTRA has some additional amazing attributes. Thanks to its extremely strong protective finish, it's very easy to maintain. Stains don't even leave a mark once wiped away using a fresh cloth with water. What's more, as a leather with a heavy surface protection, Ultra will take longer to show signs of aging or fading due to exposure to light.

**Type:** Protected leather

**Thickness:** 0.9 – 1.1 mm

**Surface:** Very strong and durable with a uniform, matt surface print

**Finish:** Extremely strong surface protection

**Tannage:** Chrome

**Dye:** Water-based aniline dye

**Particular attributes:** ANSI/BIFMA certified. A very strong, durable leather able to withstand wear and tear. Shows little signs of aging or the effects of exposure to light. Water repellent, dirt repellent, stain resistant, smudge-proof, easy upkeep.

**Price group:** 4

**More info:**

<https://sorensenleather.com/collections-2/ultra/>

