

Northern

# Reveal

Press release — Spring 2019



Reveal's smooth curves and unembellished surfaces are hallmarks of Scandinavian design, but they connect to glassblowing traditions around the world. We've enlisted master craftsmen to transform molten glass into perfect, hollow spheres, making each one of Reveal's shades unique. Although the pendant lamp is intended to be global in appeal, Reveal is distinctively Nordic. Its subtle tones reflect the pale colours of the breaking dawn and the shimmering light reflected by the sea.

As the designer fused contemporary style and traditional craftsmanship, she also found expression for elegance and simplicity. The light was pared down to the essentials to create a new relationship between structure, shade and light source. The shade is held in place by the acrylic LED light tube inside it, which is poised in a vertical position to hold it securely overhead. The caps at each end of the LED light tube are powdercoated to resemble a matt brass finish. Reveal is unique in its ability to transform handcrafted components and industrial parts into a single, expressive design.

‘Reveal shows the inspirations behind it, and brings all parts of the design into view.’

Design by Silje Nesdal

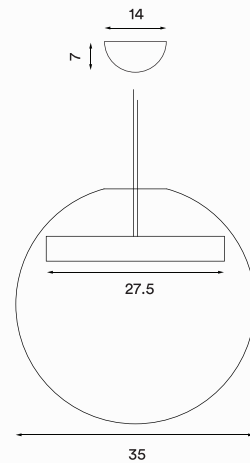


## Models and prices



Reveal

EURO 529,- / SEK 4.990,-  
DKK 3.690,- / NOK 4.790,-  
GBP 459,-



Available:  
April 2019

Retailers and distribution:  
See details at [northern.no](http://northern.no)

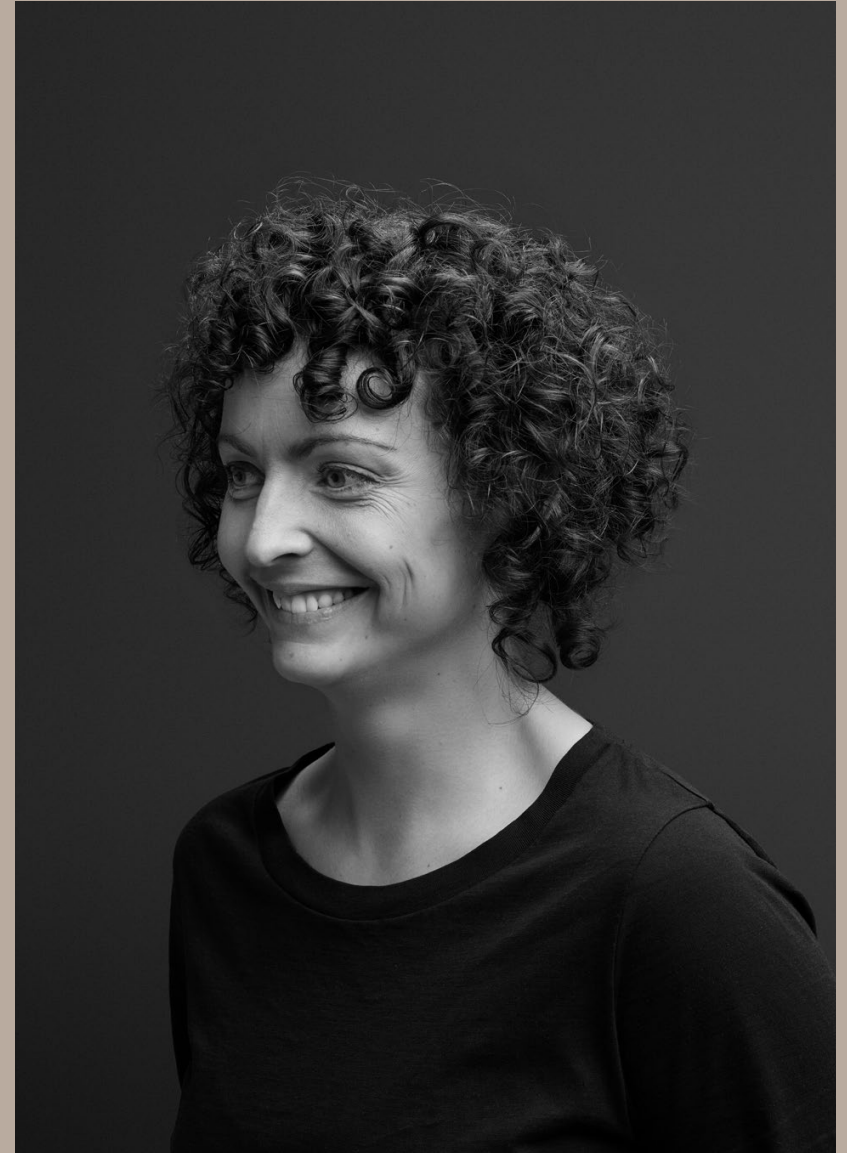
Press release — Spring 2019

Photo by Chris Tonnesen  
Styling by Per Olav Sølvberg



Norwegian designer Silje Nesdal debuted at Northern with her hand-blown glass pendant lamp Reveal, making impact from the very start. The lamp showcases the designer's cross-disciplinary skill set, which results from her studies in furniture design, interior architecture, fashion and textiles. Silje was born in the Norwegian fjords and grew up in a community with a rich heritage of textile design and woodworking. She finds inspiration in traditional craftsmanship, which she combines with new techniques to create furniture and lighting designs. Through research, testing and prototyping, Silje finds ways to combine new techniques with time-honoured craftsmanship. The streamlined products that result explore fresh approaches to contemporary design.

# Silje Nesdal



# About

Picture the North. Rugged landscapes and clear blue waters, dramatic horizons reflected in breath-taking fjords. A place filled with talent and imagination, always ready to inspire new ideas in design. It's where creative expression meets traditional craft, and where pale beauty is coupled with rough-cut contrasts. Inspirations such as these are sparking new directions for design. This is what Northern was established to pioneer.

The Northern brand was born in the studios of Northern Lighting, where a team of creatives has been illuminating lives for the past twelve years. We combine beauty with functionality, and prefer natural materials and genuine craftsmanship. Furniture and interior accessories are a natural fit for what we do, enabling us to express our characteristic style in a whole new scale.

Northern's debut collection is simplicity at its best, spelled out in streamlined designs that are fun to combine and easy to clash and contrast. Smoked wood, twilight colours and strong silhouettes create subdued moods, while subtle geometries and classic sensibilities add an elegant touch. We see the interior as a flexible, creative space, and make multifunctional products that are unified in style, as well as in spirit.

Our creative reach goes beyond our Norwegian heritage to meet the modern need for laid-back luxury and cutting-edge cool. Northern's designs can energise and inspire, create a relaxing mood, or set the scene for a soothing backdrop. Designed with the potential to make any setting unique, Northern's products add atmosphere as they reveal a new vision for Nordic style.

# Contact

Northern  
Bygdøy allé 68  
0265 Oslo, Norway

Phone – (+47) 40 00 70 37  
Mail – [post@northern.no](mailto:post@northern.no)  
Web – [northern.no](http://northern.no)

Follow us  
Facebook – [Northern.no](http://Northern.no)  
Instagram – [@northern.no](https://www.instagram.com/northern.no)

For any questions or  
comments please contact  
Head of PR & Marketing,  
Stine Birkeland at  
[stine@northern.no](mailto:stine@northern.no)

## Northern